



TECHNICAL SPECIFICATIONS



124/424 SERIES

Small displacement sleeve bushing pump and motor



124 SERIES PUMP PERFORMANCE CHART [gpm]

GEAR WIDTH [in]

SPEED [rpm]	GEAR WIDTH [in]											
	1/2	3/4	1	1 1/4	1 1/2	1 3/4	2	2 1/4	2 1/2	2 3/4	3	
1000	2.5	4.0	5.0	6.0	7.5	9.0	10.0	—	—	—	—	
1500	4.0	5.5	7.5	9.5	12.0	13.5	15.5	—	—	—	—	
2000	5.0	7.5	10.0	13.0	16.0	18.0	21.0	—	—	—	—	
2500	6.0	10.0	14.0	16.0	19.5	23.0	26.0	—	—	—	—	
3000	7.5	12.0	16.0	19.5	23.5	27.0	32.0	—	—	—	—	
Max RPM	3000							—	—	—	—	
Displacement (in ³)	0.6	0.9	1.2	1.6	1.9	2.2	2.5	—	—	—	—	
Displacement (cc)	10.2	15.2	20.3	25.4	30.5	35.6	40.6	—	—	—	—	
Max Operating PSI	3500				3300	2900	2500	—	—	—	—	

Also available in 1/8" gear sizes. Please contact a customer service representative for more information.

424 SERIES PUMP PERFORMANCE CHART [gpm]

GEAR WIDTH [in]

SPEED [rpm]	GEAR WIDTH [in]											
	1/2	3/4	1	1 1/4	1 1/2	1 3/4	2	2 1/4	2 1/2	2 3/4	3	
1000	2.5	4.0	5.0	—	—	—	—	—	—	—	—	
1500	4.0	5.5	7.5	—	—	—	—	—	—	—	—	
2000	5.0	7.5	10.0	—	—	—	—	—	—	—	—	
2500	6.0	10.0	14.0	—	—	—	—	—	—	—	—	
3000	7.5	12.0	16.0	—	—	—	—	—	—	—	—	
Max RPM	3000			—	—	—	—	—	—	—	—	
Displacement (in ³)	0.6	0.9	1.2	—	—	—	—	—	—	—	—	
Displacement (cc)	10.2	15.2	20.3	—	—	—	—	—	—	—	—	
Max Operating PSI	4500			—	—	—	—	—	—	—	—	

Also available in 1/8" gear sizes. Please contact a customer service representative for more information.

SPECIFICATIONS

Series	Type	Frame Size	Displacement	Max RPM	GPM @ 1000RPM	Max PSI
124 / 424	Bushing	Small	0.62-2.48	3000	2.5-10.5	3500

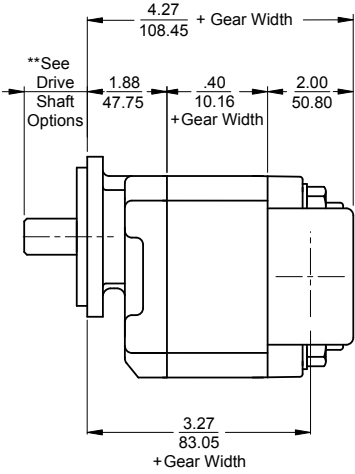
124/424 SERIES

MOTOR PERFORMANCE CHART

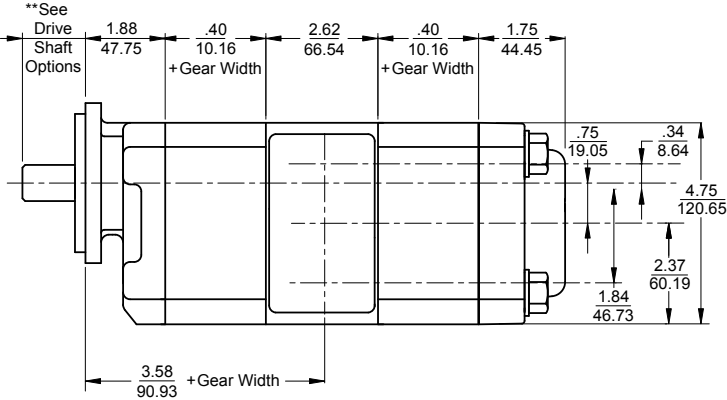
GEAR WIDTH [in]

SPEED [rpm]	1		1 1/4		1 1/2		1 3/4		2	
	Flow (GPM)	Torque (in-lb)	Flow (GPM)	Torque (in-lb)	Flow (GPM)	Torque (in-lb)	Flow (GPM)	Torque (in-lb)	Flow (GPM)	Torque (in-lb)
900	7.70	638.00	8.20	821.00	11.10	921.00	10.90	943.00	13.70	907.00
1200	9.30	644.00	10.20	821.00	13.60	927.00	13.90	950.00	17.10	924.00
1500	11.00	650.00	12.20	823.00	16.10	924.00	16.90	951.00	20.30	920.00
1800	12.50	647.00	14.30	820.00	18.60	923.00	19.80	943.00	23.70	919.00
2100	14.10	62.00	16.30	815.00	21.10	920.00	22.80	932.00	27.00	903.00
2400	15.80	644.00	18.30	814.00	23.60	915.00	25.70	930.00	30.30	905.00
2700	17.30	638.00	20.30	811.00	26.10	906.00	28.70	923.00	33.60	897.00
3000	18.90	634.00	22.30	804.00	28.60	906.00	31.60	922.00	36.90	885.00
PSI	3500				3300		2900		2500	

DIMENSIONAL DATA

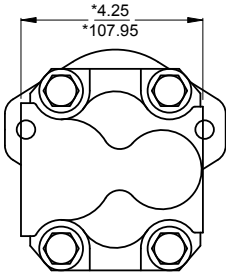


SINGLE UNIT



MULTIPLE UNIT

SINGLE UNIT



MULTIPLE UNIT

